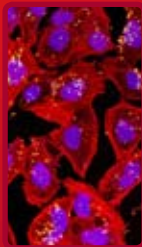


# SEPSIS

## THE EXTENT OF THE PROBLEM

- sepsis is the leading cause of death in ICU
- 200,000 cases of sepsis occur every year in the UK
- severe sepsis can increase the chance of mortality up to 50%
- 1,400 people worldwide die of sepsis every day
- the incidence of sepsis is rising



## INTERNATIONAL DEFINITIONS

**Systemic Inflammatory Response Syndrome (SIRS)** is diagnosed when two or more of the following are present:

- Temperature  $>38.3^{\circ}\text{C}$  or  $<36^{\circ}\text{C}$
- Heart rate  $>90$  beats per minute (bpm)
- Respiratory rate  $>20$  breaths per minute or  $\text{PaCO}_2 <32$  mm Hg
- White blood cell count  $>12,000/\mu\text{L}$ ,  $<4000/\mu\text{L}$ , or 10% immature (band) forms

Sepsis is diagnosed where SIRS is present and the patient is suffering from an infection

**If Sepsis is confirmed**, treatment, as per Surviving Sepsis guidelines, is as follows:  
Oxygen, Hourly observations, IV antibiotics, Fluid therapy and hourly re-assessment

## WHAT DO WE WANT FROM YOU?

- Baseline observations of: Heart Rate, Respiratory Rate, Blood Pressure, GCS / AVPU, O<sup>2</sup> saturation, Temperature
- Initiation and completion of all aspects of SEWS/ MEWS chart including a SEWS /MEWS total
- Time of documented entries
- Documentation of any suspicion of sepsis and source
- Time of antibiotic administration

## NORMAL BLOOD VALUES

Na	135 - 145 mmol/l	K	3.5 - 5.0 mmol/l
Chloride	98 - 108 mmol/l	Urea	2.5 - 7.5 mmol/l
Glucose	3.5 - 5.5 mmol/l	Lactate	<2.4 mmol/l
ESR	2 - 10 mm/hour	Troponin	<0.04mg/l
Hb	M: 13 - 18 g/dl F: 11.5 - 16.5 g/dl	WCC	4000 - 10,000/ $\mu$ L
INR	1.0 international unit	PT	9 - 13 seconds
PO2	10.5 - 13.5 kPA	PCO2	4.6 - 6.0 kPA
H+	36 - 43 nmol/l		

For further information,  
please contact:  
National Audit Team on  
0131 242 3862  
[www.stag.scot.nhs.uk](http://www.stag.scot.nhs.uk)

**STAG**  
**SEPSIS**